

# ToughSonic® 30 Level & Distance Sensor

Windows PC or Button Setup, Waterproof, Multiple Outputs

TSPC-15S Series

**TSPC** sensors and SenixVIEW software put the power of ultrasonics in your hands yet retain the simplicity of push-button TEACH setup. You can quickly adjust, optimize, save and clone your applications without calibration!

ToughSonic sensors contain a rugged transducer potted in a stainless steel housing for long life.

Outputs respond to measured distance and non-contact technology means nothing touches your materials.

Many applications exist in all industries. Contact Senix today to discuss your specific needs.

## Non-Contact Ultrasonic Distance & Level Measurement

### Features

#### Distance Measurements

- Long range, short dead band
- Unaffected by optical factors like color and transparency
- PC or button "teachable" setup
- Narrow beam with adjustments to optimize performance
- Temperature compensated

#### Packaging & Performance

- Quick mounting
- Durable sealed housing for wet or dirty applications
- Short & overload protected I/O
- Multi-sensor synchronization
- Adjustable sensitivity
- Rear status indicators (3)

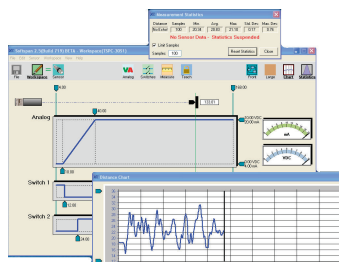
**Free Functionality** using adjustable interface features like switch hysteresis and time delays to build complete solutions such as pump or material flow controllers. Save cost by eliminating PLCs, delay circuits and time delay relays!



**SenixVIEW PC  
Software included!**

### PC Setup Power!

**Use SenixVIEW** software (see separate data sheet) to select and adjust all interfaces, timing parameters, filters and modes. Then view, analyze or log data to optimize your application.



**Flexible configuration** means fewer parts to stock and quick duplication! Higher volume OEM options are available.

**Push-button "teach"** features provide for several common adjustments when a PC is not available.

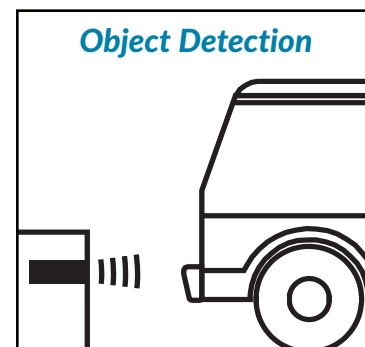
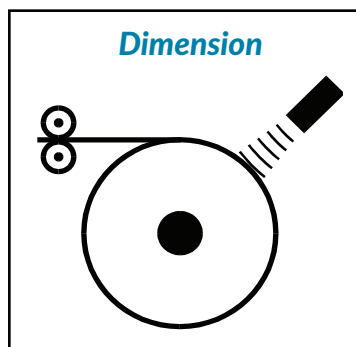
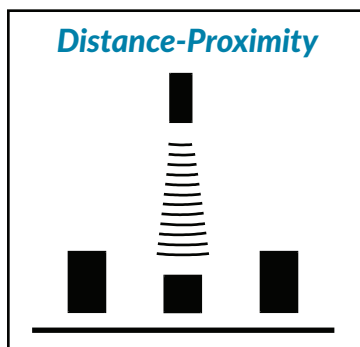
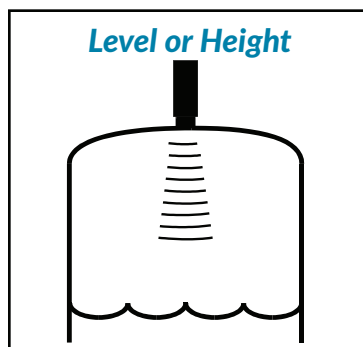
### Multiple Outputs

In addition to the model's serial data interface there are five simultaneous outputs, fully configurable with SenixVIEW.

**Analog Outputs (3)** include 0-10 VDC and dual 4-20 mA current loops (sinking and sourcing). These outputs have user-selectable voltage/current ranges, adjustable endpoint distances, slope reversal, timing parameters and much more.

**Switches (2)** are SenixVIEW configurable as "PNP" or "NPN" type (sourcing or sinking). Each has adjustable set point, hysteresis, window, initial conditions, ON delay, OFF delay and loss of target response for ultimate flexibility.

**TOUGHSONIC®**  
Tough. Smart.





## ToughSonic® 30 Level & Distance Sensor

### Specifications

<b>Optimum Range</b>	20 ft. (6.1 m)	<b>Max Range</b>	30 ft. (9.1 m)
<b>Deadband</b>	Typ. < 10 in. (25.4 cm)	<b>Adjustment</b>	Button "teach" or SenixVIEW
<b>Case Material</b>	316 stainless steel	<b>Configuration</b>	Stored in non-volatile memory
<b>Temperature</b>	-40 to 158 F (-40 to 70 C)	<b>Outputs</b>	Five selectable, plus serial data
<b>Humidity</b>	0 to 100% operating	<b>Transducer</b>	Ruggedized piezoelectric
<b>Compensation</b>	Temperature compensated	<b>Protection</b>	NEMA-4X, NEMA-6P, IP68
<b>Resolution</b>	Digital: 0.0068 in. (0.172 mm); Analog: 4099 steps (0-10 VDC), 3279 steps (4-20 mA)		
<b>Repeatability</b>	Nominal 0.2% of range @ constant temp. Affected by target, distance, environment		
<b>Update Rate</b>	10 Hz (100 ms), SenixVIEW adjustable; affected by SenixVIEW filter selections		
<b>Voltage Output</b>	0-10, 0-5 VDC or PC customized; 10 mA max. (*)		
<b>Current Loop #1</b>	Current sourcing 4-20 mA or PC customized, max. loop 450Ω (*)		
<b>Current Loop #2</b>	Current sinking 4-20 mA or PC customized, max. loop 450Ω (*)		
<b>Sinking Switch</b>	150 mA max. @ 40 VDC max., teachable set point & polarity, fault indication		
<b>Sourcing Switch</b>	150 mA max. @ input voltage, teachable set point & polarity, fault indication		
<b>RS-232, RS-485</b>	Modbus protocol, 9600-115200 baud (selectable), 8 data bits, 1 stop, no parity		
<b>SYNC feature</b>	Permits up to 32 sensors to operate in close proximity without interaction		
<b>Target Requirements</b>			
<b>Objects</b>	Detects flat or curved objects. Surface must reflect ultrasound to sensor		
<b>Max. Distance</b>	Affected by size, shape, orientation of target (sound level reflected back to sensor), environment Restrict use to Optimum Range when using over a wide range of environmental conditions		
<b>Orientation</b>	Flat surfaces should be oriented perpendicular to sensor output beam		
<b>Optical</b>	Unaffected by target color, transparency, light, or other optical characteristics		

### Connections

Cable Connection	Wire	Description
<b>Power</b>	Brown	10-30 VDC @ 70 mA maximum; Typical: 45 mA @ 24 VDC (**)
<b>Ground</b>	Blue	Power and interface common
<b>Voltage Output *</b>	Violet	0-10 VDC, 0-5 VDC or custom end values between 0 and 10 VDC
<b>Current Loop Output *</b>	Green	4-20 mA sourcing (adjustable end values between 4 and 20 mA)
<b>Current Loop Output *</b>	Orange	4-20 mA sinking (adjustable end values between 4 and 20 mA)
<b>Switch #1 Output</b>	Black	Sinking ("NPN") or Sourcing ("PNP"), user selected
<b>Switch #2 Output</b>	White	Sinking ("NPN") or Sourcing ("PNP"), user selected
<b>RS-232 out / RS-485-</b>	Gray	Serial data connection (depends on model - see model selection)
<b>RS-232 in / RS-485+</b>	Yellow	Serial data connection (depends on model - see model selection)

(\*) Analog outputs share common distance endpoints. Both 4-20 mA outputs share the same adjustable max / min end values. The maximum loop resistance is derated below 15 VDC input voltage.

(\*\*) At default update rate. Output currents not included. Sensitivity reduced below 15 VDC input voltage.

Senix also offers interconnection, communication, mounting, and display components

### Part Numbers

Model Number	Description
TSPC-15S-232	Serial RS-232 interface (PC COM port compatible)
TSPC-15S-485	Serial RS-485 interface (allows addressable multi-sensor networks)

Senix also offers interconnection, communications, mounting, and display components

### Dimensions

Dimensions in Inches (mm)	Mechanical
	<b>Mounting:</b> 1.5 inch NPT thread, top or bottom
	<b>Attached Cable:</b> 6.5ft (2 m)
	<b>Total Weight:</b> 22.6 oz. (0.64 kg)