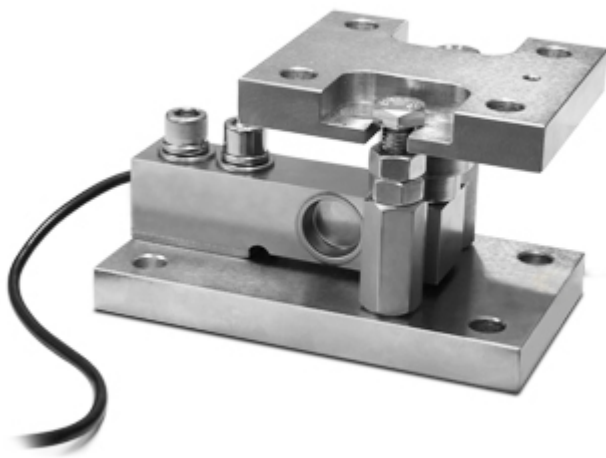


## KSBC2

Nickel-plated kit "KSBC" series, for shear beam SBX load cells



Assembly kit for shear beam load cells SBX series, up to 2.500kg. Suitable for weighing of hoppers, tanks, platforms, etc. **ADVANTAGES:**

- Nickel-plated construction
- Higher plate with spherical joint, for optimal weighing precision
- Anti-overturn
- Locking/bypass system for facilitated transport and maintenance
- Quick installation/removal of the load cell (even if full- loaded)

Working in cooperation with:

**KAS CONTROL CO.,LTD.**

THAKHAM RD. 90/4 - 10150 - BANGKOK - THAILAND  
Tel. 020454155 Fax. 020454151  
sungkheed@kascontrol.co.th

**The best solution  
for advanced industrial  
applications**

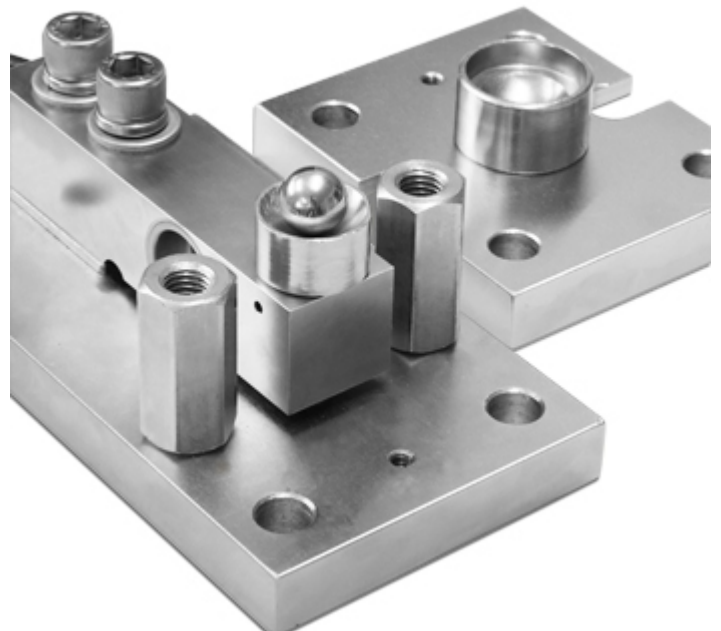
## LOAD CELLS KIT: TECHNICAL FEATURES

- For shear-beam load cells, SBX series, from 300 to 2500 kg
- Nickel-plated manufacturing
- Self-centering spherical joint, for precise weighing
- Locking system for cell protection during transport or maintenance of the structure
- Limit nuts and screws, adjustable
- Anti-overturn (within the limits declared)

### DETAIL 1



### DETAIL 2



**DETAIL 3**





www.diniargeo.com



“YOUR WORLDWIDE PARTNER FOR WEIGHING,”

**DINI ARGEO**  
**FRANCE sarl**  
Nogent-sur-Marne

**DINI ARGEO**  
**GMBH**  
Sinsheim - Germany

**DINI ARGEO**  
**UK Ltd**  
Taunton - United Kingdom

**DINI ARGEO WEIGHING**  
**INSTRUMENTS Ltd**  
Shanghai - China

**DINI ARGEO**  
**WEIGHBRIDGES**  
Calto (RO) – Italy



**HEAD OFFICE**  
Via Della Fisica, 20  
41042 Spezzano di Fiorano Modena - Italy



***KAS CONTROL CO.,LTD.***

THAKHAM RD. 90/4 - 10150 - BANGKOK - THAILAND

Tel. 020454155 Fax. 020454151

[sungkheed@kascontrol.co.th](mailto:sungkheed@kascontrol.co.th)

**SALES AND TECHNICAL ASSISTANCE SERVICE**